



Chen Hsong Europe



JETMASTER LARGE MK6 SERIES

800 - 1650 TON TOGGLE - *Injection molding machine*



JETMASTER LARGE 650 - 3000 TON
Injection molding machine

EUROMAP STANDARD

Hole pattern and ejector pattern according to Euromap standards*.
T-slot or other pattern possible on request.

BECKHOFF X-MOLD CONTROL APPLICATION

The XMold controller of Beckhoff offers an integrated solution for the automation of the Chen Hsong Injection Molding machines. High-speed applications and complete production cells can be implemented with XMold. The integrated eXtreme Fast Control technology enables the sampling of rapidly changing input signals, allowing the injection process to be controlled with high precision. The 12,1 " screen area with touch function enables a clear process visualization.



EUROPEAN COMPONENTS

Standard European components:

- | | |
|------------------------|---|
| Hydraulic valves: | Bosch Rexroth or YUKEN |
| Hydraulic pump: | Eckerle |
| Linear transducers: | Gefran or Novotechnik |
| Electrical components: | Siemens, Schneider, Telemecanique, PILZ |

INOVANCE SERVO DRIVE SYSTEM

The Inovance servo drive system is designed dedicated for injection molding machines. This system provides high performance, precision, low noise and easy maintenance. For machines using this servo drive, energy can be saved by up to 80%.



*Hole pattern/ejector pattern may differ from standard due to platen design.

ENERGY SAVING

The system, with speed controlled servomotor, drives a fixed internal gear pump. The system pressure is measured real-time by a pressure sensor. In this way it can provide the required flow according the requirement to eliminate non-functioning consumption. In total this leads to lower energy consumption, high precision, low noise and low inertia.



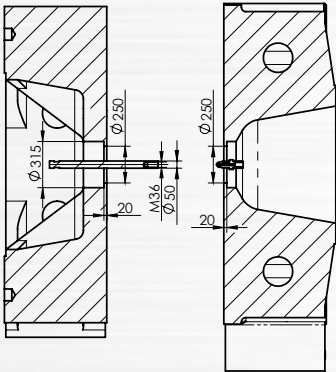
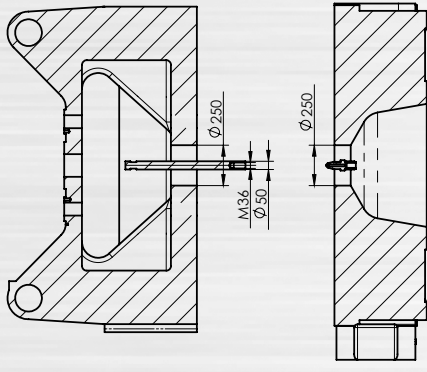
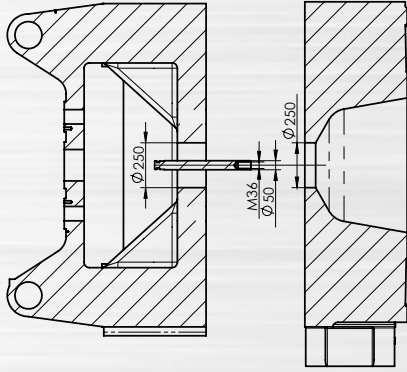
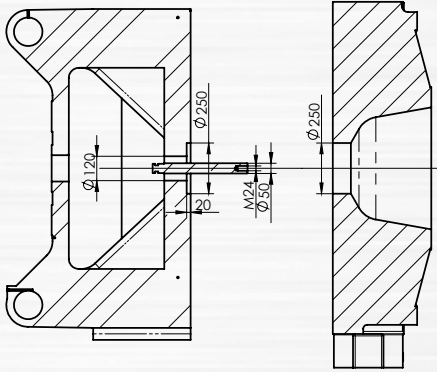
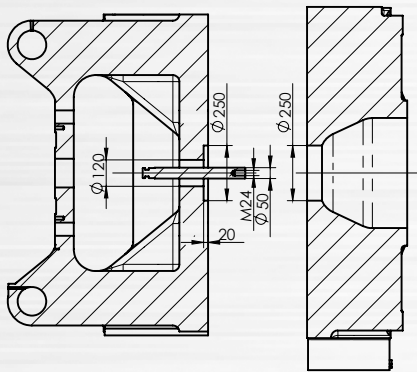
STANDARD AND OPTIONAL FEATURES

CLAMPING UNIT	STANDARD	OPTION
Automatic mold height adjust	•	
Hydraulic safety device	•	
Core puller on moving platen	2	
Additional core pullers (up to 8 core pullers)		•
Airblow on fixed and moving platen	1 + 1	•
Parallel core movement		•
Parallel ejector movement		•
Euromap 2 platen design *	•	
Euromap 13 for core and ejector	•	
Euromap 18 for robot mounting	•	
Euromap 67 for robot communication	•	
Euromap 70 and 70.1		•
Larger maximum mold height		•
Automatic lubrication on toggle	•	
Automatic lubrication on mold height adjust	•	
Anti-skid plates on horizontal surfaces	•	
Automatic front door	•	
OTHERS		
Up to 32 zones integrated hotrunner System (Euromap 14 standard)		•
Power sockets 3-phase 400V 32A and 16A	One each	•
Power sockets 2-phase 240V 16A	2	•
Waterflow regulators (more available upon request)	8 circuits	•

INJECTION UNIT	STANDARD	OPTION
Ceramic heater bands	•	
Nitrated screw and barrel	•	
Bi-metallic screw and barrel		•
Controlled barrel cooling	•	
Barrel insulation		•
PET or PVC screw features		•
Adjustable backpressure	•	
Barrel shut-off nozzle		•
Hydraulic/pneumatic sequential injection (up to12 valves)		•
Linear transducer on injection stroke	•	
Linear transducer on injection unit stroke	•	
Screw speed indicator	•	
Central lubrication points	•	
Anti-skid plates on horizontal surfaces	•	
Parallel plasticizing		•
Lock angled type screw tip set	•	
E-drive (HYBRID)		•
CONTROLLER		
Beckhoff X-Mold controller	•	
12,1 " TFT display with touch function	•	
LED backlight	•	
Free programmable cores	•	
Sequence editor	•	
High-precision mold safety	•	
EtherCAT-based eXtreme Fast Control technology	•	
Ethernet interface for teleservice via internet	•	
USB interface	•	
Euromap 67 interface	•	
Industry 4.0		•
OPC-UA / Euromap 77		•

*Hole pattern/ejector pattern may differ from standard due to platen design.

Injection unit	Unit	JM800-MK6			JM1000-MK6			JM1200-MK6			JM1400-MK6			JM1650-MK6		
Swept Volume	cm³	3179	3770	4749	4146	5224	6217	5699	6782	7960	7347	8623	10001	9286	10770	12364
Injection Weight (PS)	g	2893	3430	4322	3773	4754	5658	5186	6172	7244	6686	7847	9101	8450	9801	11251
Screw Diameter	mm	90	98	110	98	110	120	110	120	130	120	130	140	130	140	150
Screw L/D Ratio	L/D	24,0	22,0	19,6	24,7	22,0	20,2	24,0	22,0	20,3	23,8	22,0	20,4	23,7	22,0	20,5
Injection Pressure (Max.)	kgf/cm²	2.170	1.840	1.460	2.320	1.840	1.550	2.190	1.840	1.570	2.110	1.800	1.550	2.090	1.800	1.570
Injection Pressure (Max.)	MPa	213	180,4	143,2	227,5	180,4	152	215	180,4	154	207	176,5	152	205	176,5	154
Injection Rate (PS)	g/s	607	720	907	650	820	975	875	1045	1226	1035	1215	1409	1195	1390	1596
Plasticizing Capacity (PS)	g/s	87	109	156	80	110	143	146	190	223	174	205	220	149	159	213
Screw Rotation Speed (Max.)	rpm	130			110			110			100			95		
Screw Stroke	mm	500			550			600			650			700		
Nozzle Contact Force	t	16.7			16.7			16.7			16.7			16.7		
Nozzle Stroke	mm	560			595			700			720			800		
Clamping unit																
Clamping Force (Max.)	t	800			1000			1200			1400			1650		
Opening Stroke	mm	1050			1230			1310			1500			1600		
Maximum Daylight	mm	2050			2390			2560			2900			3100		
Mould platen (HxV)	mm	1400 x 1400			1630 x 1630			1770 x 1770			2030 x 1930			2190 x 2070		
Space between Tie Bars (HxV)	mm	1020 x 1020			1160 x 1160			1250 x 1250			1450 x 1350			1550 x 1430		
Max. Mould Thickness	mm	1000			1160			1250			1400			1500		
Min. Mould Thickness	mm	400			450			500			650			700		
Centre Ring Diameter	mm	280			320			320			400			400		
Ejector Stroke	mm	18.2			21.5			21.5			35.2			35.2		
Ejector Force	t	250			250			250			250			315		
Mould centerring diameter	mm															
Dry cycle time	s															
Others																
Energy consumption (PP)	kWh/kg	0,32			0,38			0,47			0,57			0,59		
Sound level	dBA															
System Pressure	MPa	175,0			175,0			175,0			175,0			175,0		
Pump Motor	kW	116			138			174			206			214		
Electrical heating	kW	47			58.4			70.1			77.6			95.4		
Temperature Control Zones	Zones	6+1			6+1			7+1			7+1			7+1		
Oil Tank Capacity	L	1050			1250			1600			1750			2000		
Machine Dimensions (LxWxH)	m	11 x 2.4 x 2.5			12 x 2.7 x 3.3			12.6 x 2.8 x 3.6			13.6 x 3.2 x 3.7			15 x 3.2 x 3.8		
Machine Weight	t	34,0			44			60,0			77,0			97,0		

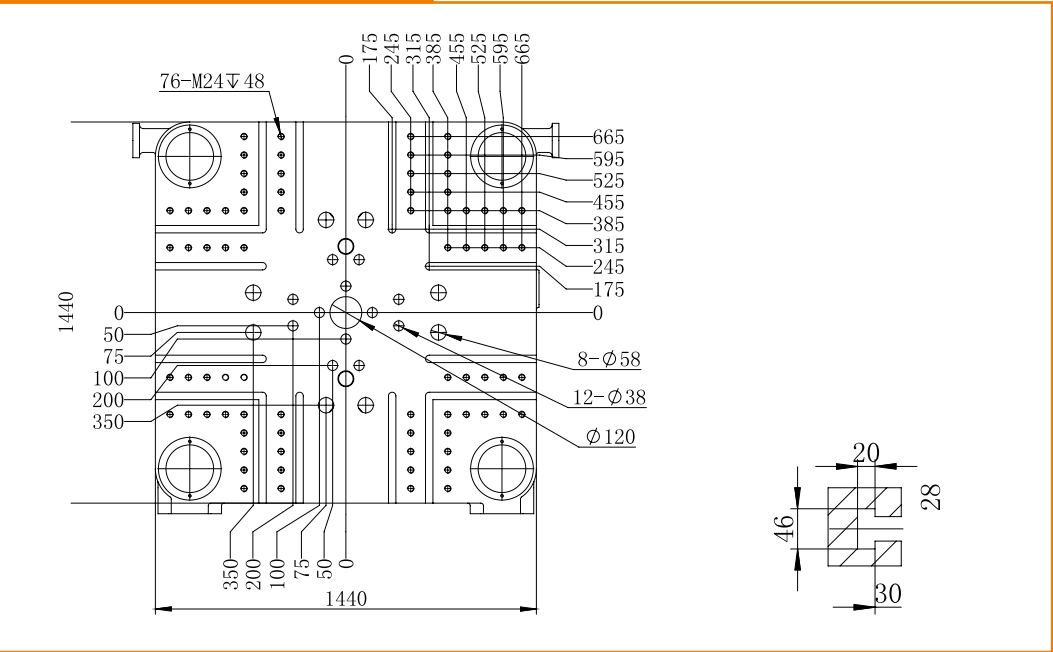


JETMASTER LARGE MK6 SERIES

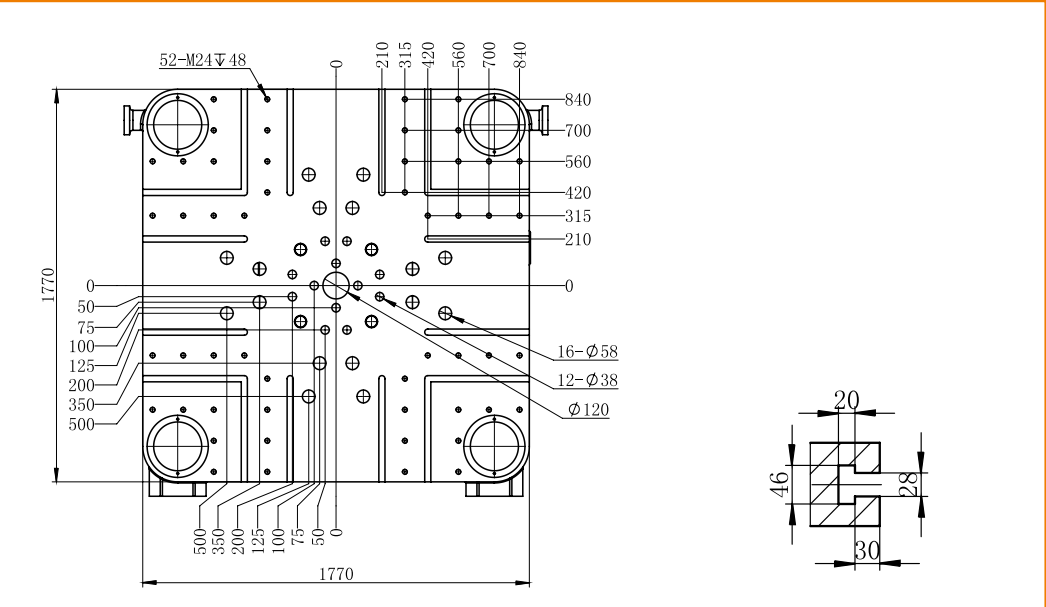
SERIES | 800-1650

Injection molding machine

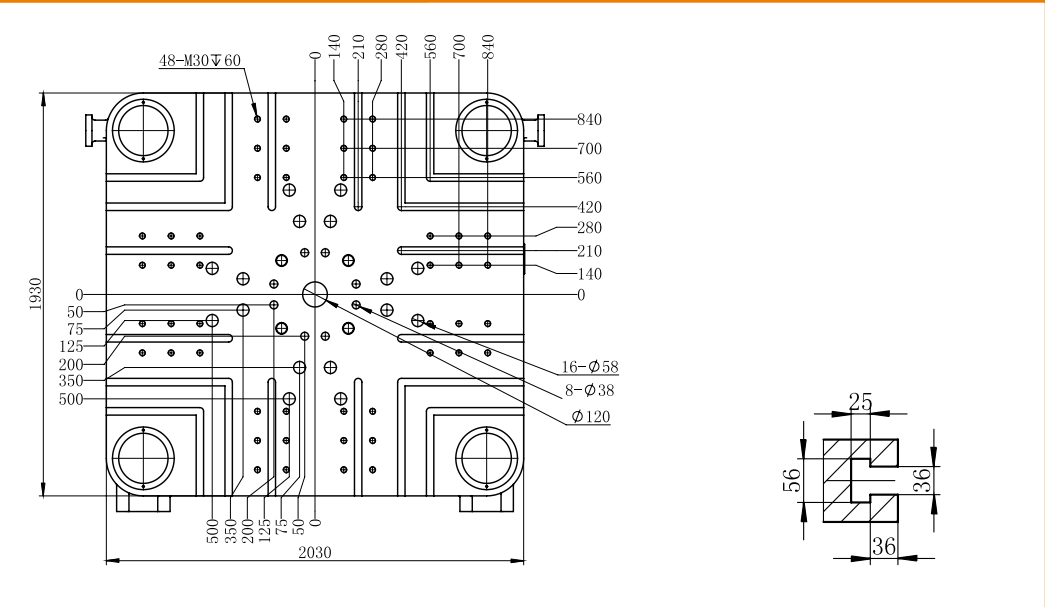
JM800-MK6



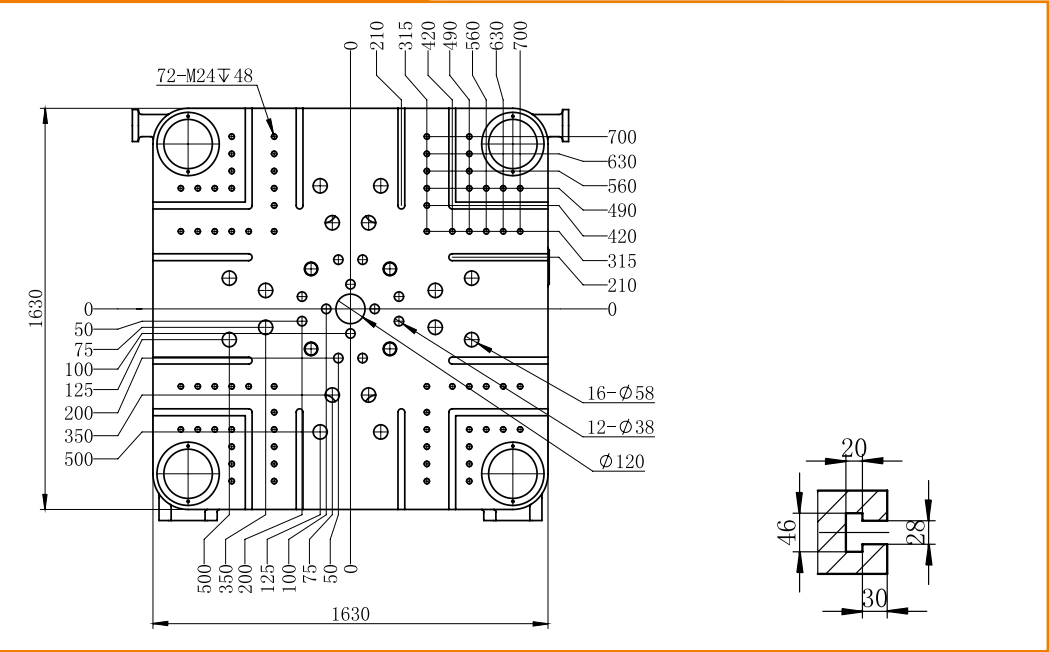
JM1200-MK6



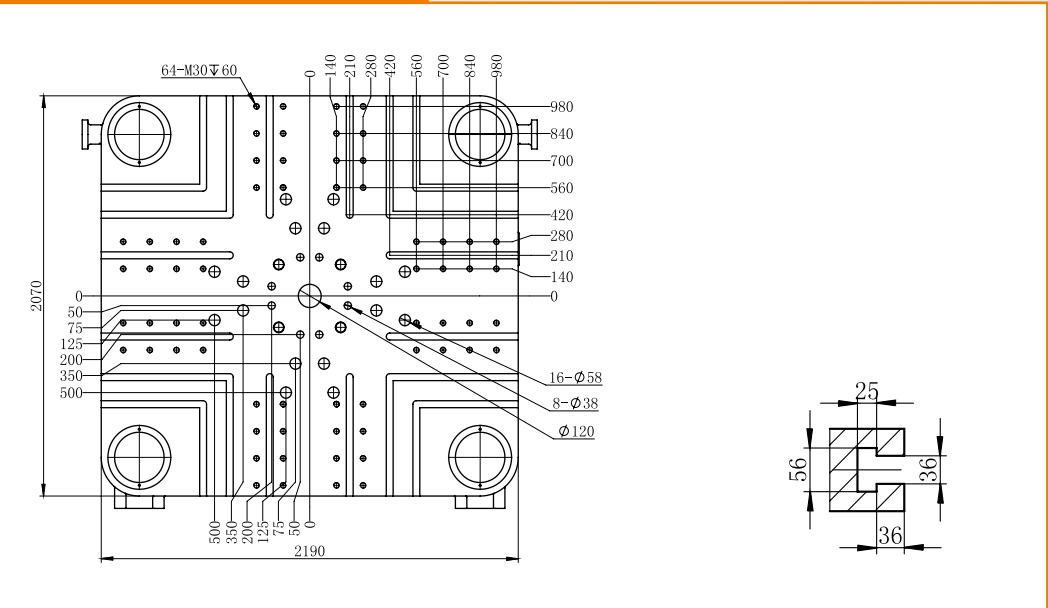
JM1400-MK6



JM1000-MK6



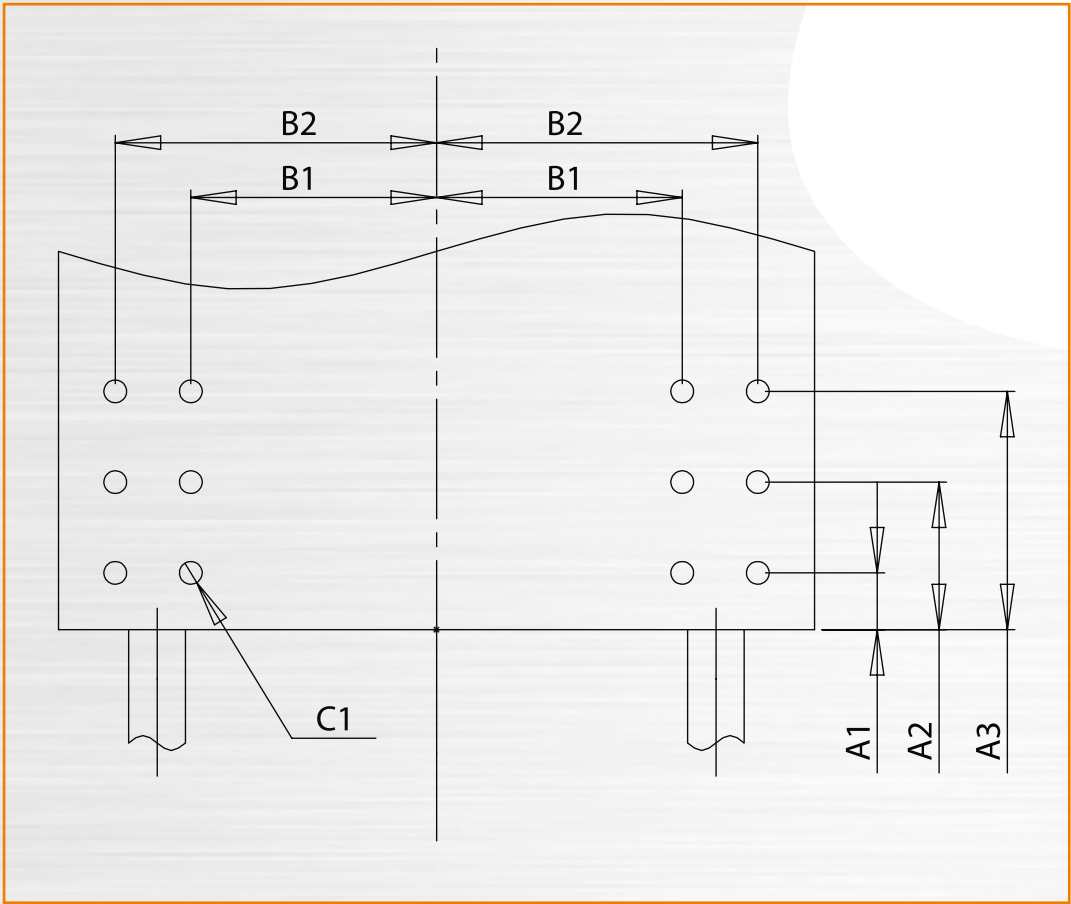
JM1650-MK6



JETMASTER LARGE MK6 SERIES

Platen Mount Hole (According to Euromap 18)

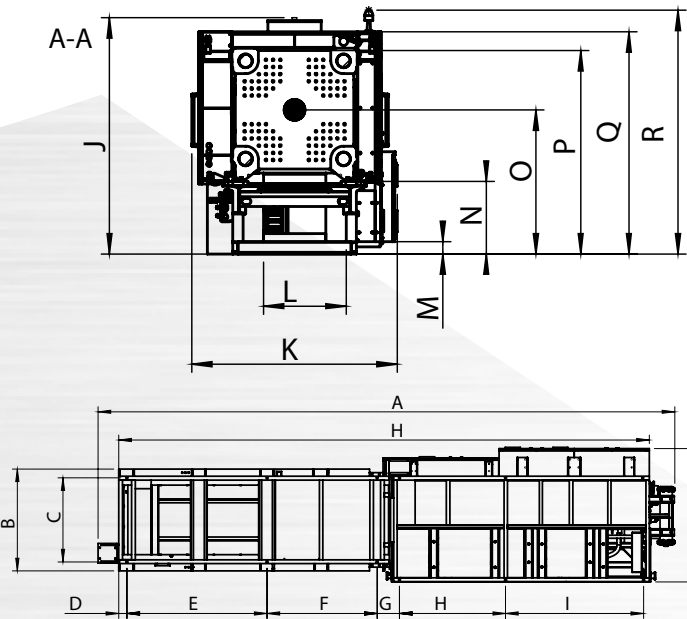
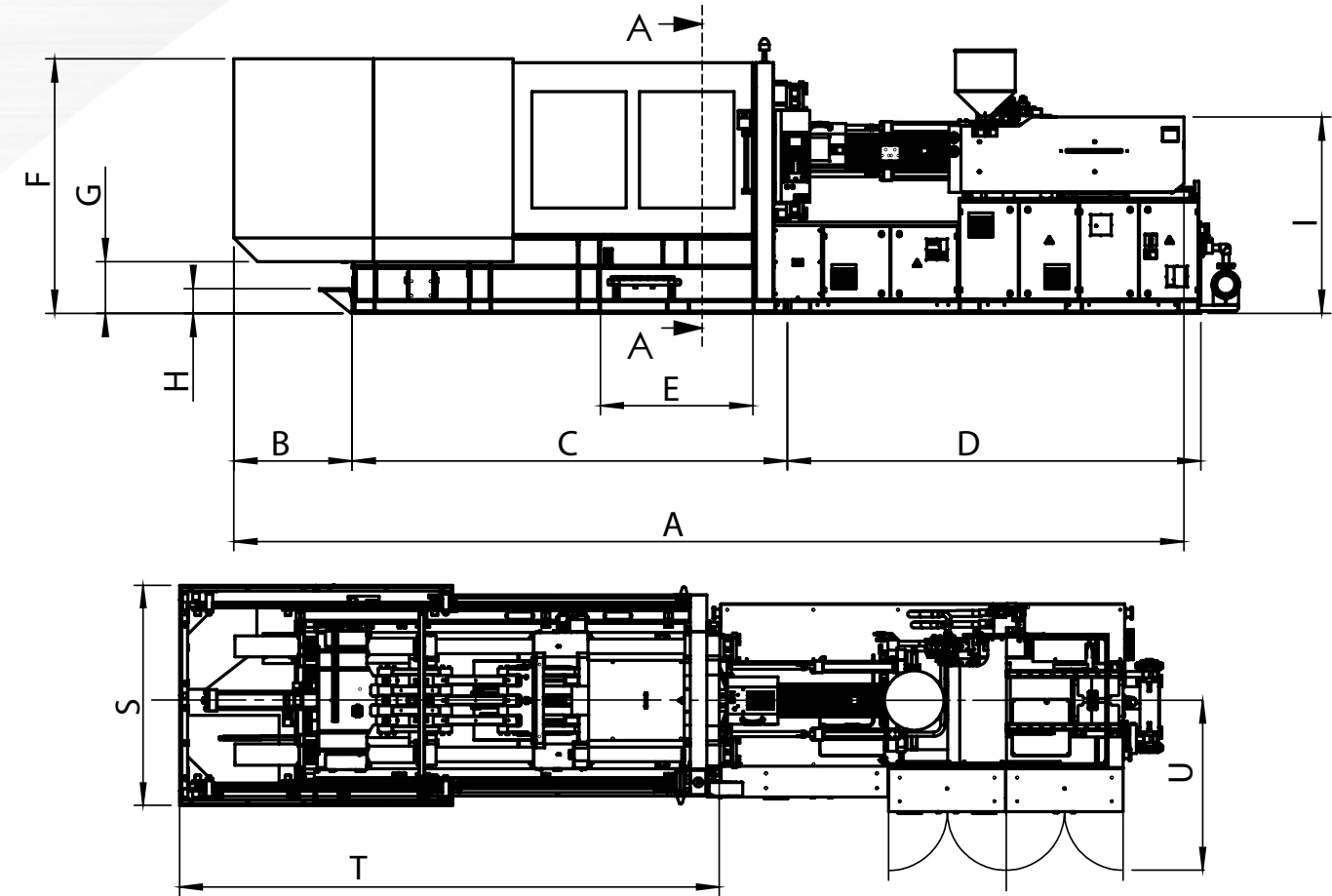
Model	Distance between tiebars	Euromap 2	Mount hole size and position (see figure right)					
			A1	A2	A3	B1	B2	C1
JM800-MK6	1000*1000	S 1000 / 1000	70	175	280	420	630	M24
JM1000-MK6	1100*1100	S 1000 / 1000	70	175	280	420	630	M24
JM1200-MK6	1250*1250	S 1250 / 1250	70	175	280	560	840	M24
JM1400-MK6	1400*1350	S 1400 / 1400	70	210	350	560	840	M24
JM1650-MK6	1500*1500	S 1400 / 1400	70	210	350	560	840	M24



Exchangable hardened centre RING is an OPTION.

JETMASTER LARGE MK6 SERIES

Injection molding machine



SYMBOL	JM800-MK6	JM1000-MK6	JM1200-MK6	JM1400-MK6	JM1650-MK6
A					
B					
C					
D					
E					
F					
G					
H					
I					
J					
K					
L					
M					
N					
O					
P					
Q					
R					
S					
T					
U					

MODEL	A	B	C	D	E	F	G	H	I	J	H
JM800-MK6											
JM1000-MK6											
JM1200-MK6											
JM1400-MK6											
JM1650-MK6											

Exchangable hardened centre RING is an OPTION.



Chen Hsong Europe

Distributor: **Chen Hsong Europe B.V.**
Address: **Hulostraat 2**
6911 KX Pannerden
The Netherlands
Phone: **+31 (0)316-240718**
Mail: **info@chenhsongeuropa.eu**
Website: **www.chenhsongeuropa.eu**